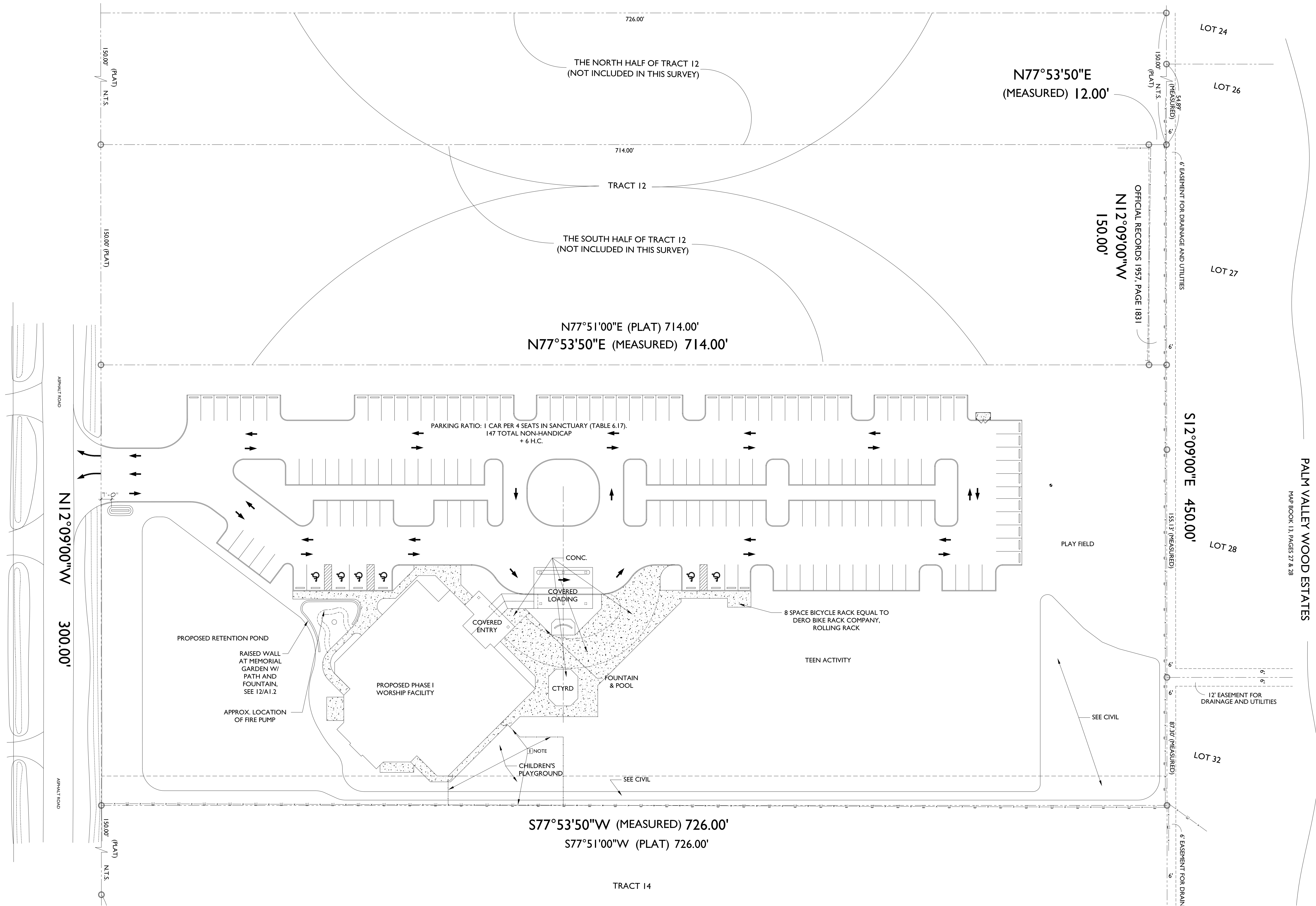


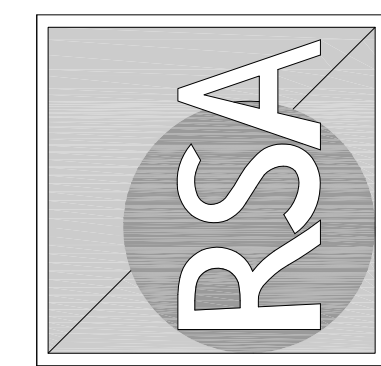
ALL REPORTS, PLANS, SPECIFICATIONS, COMPUTER FILES, FIELD DATA, NOTES AND OTHER DOCUMENTATION PREPARED BY RONALD SCALISI ARCHITECTS, P.A. (RSA) AS INSTRUMENTS OF SERVICE SHALL REMAIN THE PROPERTY OF RSA. RSA SHALL RETAIN ALL COMMON LAW, STATUTORY AND OTHER RESERVED RIGHTS, INCLUDING THE COPYRIGHT THEREON.



ARCHITECTURAL SITE PLAN

SCALE: 1" = 30'-0"

10 1 2 4 8



RONALD SCALISI ARCHITECTS, P.A.
 CORPORATE LICENSE # AA 0002450
 1399 ST. JOHN'S BLUFF ROAD NORTH, SUITE A-5
 JACKSONVILLE FL 32225 (904) 998-8860

SEAL: RONALD L. SCALISI
 AR 0011477

46 POINT DESIGN GROUP, LLC
 LANDSCAPE ARCHITECTURE
 CIVIL ENGINEERING
 GOODSON NEWMAN & ASSOCIATES
 CIVIL ENGINEERING
 ATLANTIC ENGINEERING SERVICES
 STRUCTURAL ENGINEERING
 HADDAD ENGINEERING, INC.
 MECHANICAL ENGINEERING
 ELECTRICAL ENGINEERING

MASTER PLANNING & NEW SANCTUARY FOR
PONTE VEDRA UNITED METHODIST CHURCH
 76 S. ROSCOE BOULEVARD
 PONTE VEDRA BEACH, FLORIDA 32082

PROJ. NO:	200716
DATE:	12 JUNE 2008
DATE:	07 JULY 2008
ENTIRE SHEET	
DRAWN BY:	WDC
CHECKED BY:	RLS
ARCHITECTURAL SITE PLAN	
SHEET NO. OF:	A.I.1 SET.