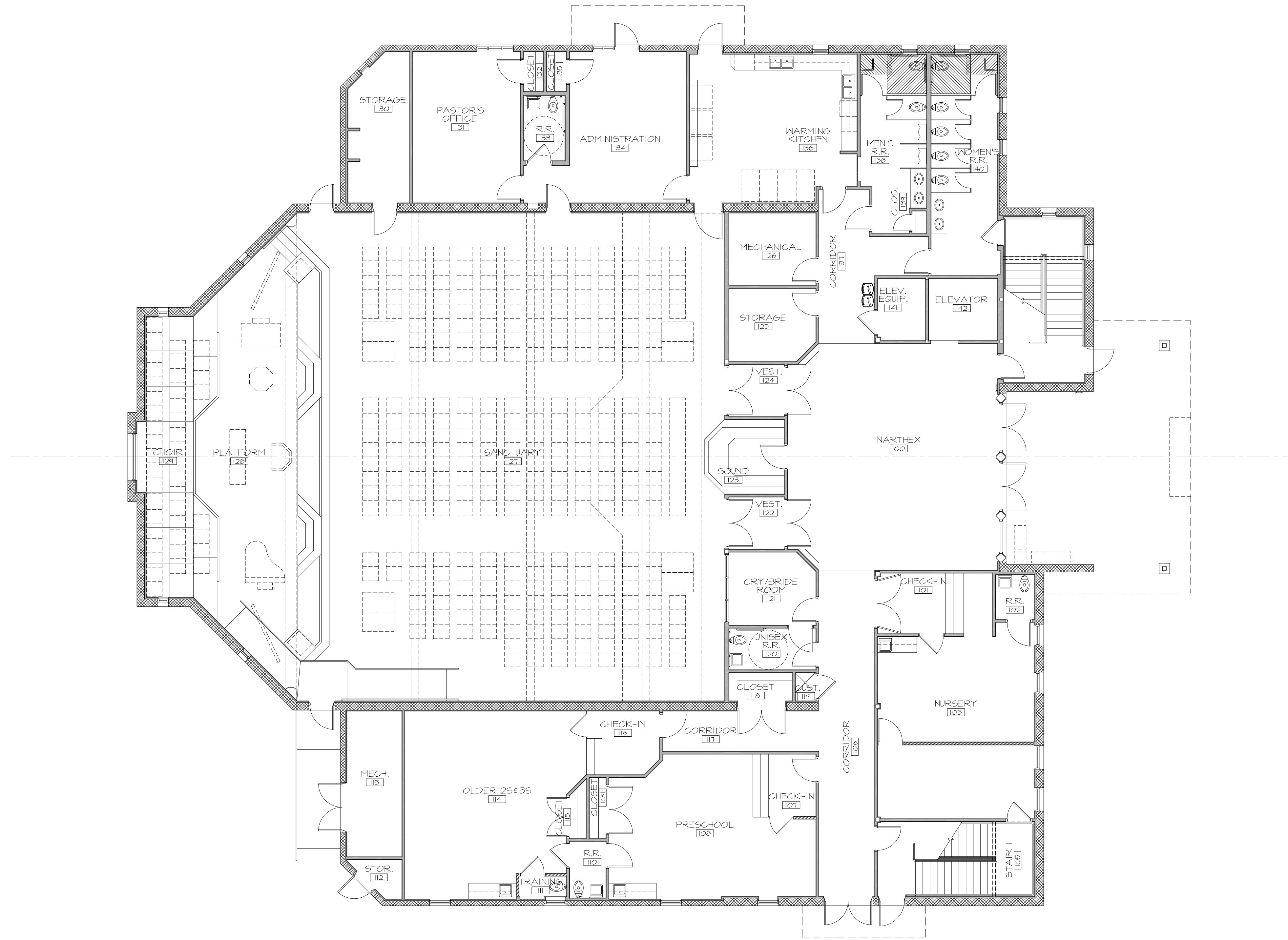
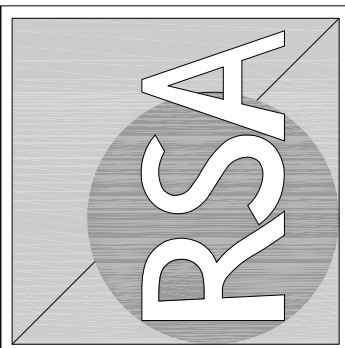


ALL REPORTS, PLANS, SPECIFICATIONS, COMPUTER FILES, FIELD DATA, NOTES AND OTHER DOCUMENTATION PREPARED BY RONALD SCALISI ARCHITECTS, P.A. (RSA) AS INSTRUMENTS OF SERVICE SHALL REMAIN THE PROPERTY OF RSA. RSA SHALL RETAIN ALL COMMON LAW, STATUTORY AND OTHER RESERVED RIGHTS, INCLUDING THE COPYRIGHT THEREON.



GROSS SQUARE FOOTAGE:  
 FIRST FLOOR: 11,006 SQ. FT.  
 TOTAL FOR BOTH FLOORS: 15,096 SQ. FT.



**RONALD SCALISI ARCHITECTS, P.A.**  
 CORPORATE LICENSE # AA 0002450  
 1399 ST. JOHN'S BLUFF ROAD NORTH, SUITE A-3  
 JACKSONVILLE FL 32225 (904) 998-8860

SEAL: RONALD L. SCALISI  
 AR 0011477

4: POINT DESIGN GROUP, LLC  
 LANDSCAPE ARCHITECTURE  
 CIVIL ENGINEERING  
 GOODSON NEWMAN & ASSOCIATES  
 CIVIL ENGINEERING  
 ATLANTIC ENGINEERING SERVICES  
 STRUCTURAL ENGINEERING  
 MECHANICAL ENGINEERING  
 HADDAD ENGINEERING, INC.  
 MECHANICAL ENGINEERING  
 ELECTRICAL ENGINEERING

MASTER PLANNING & NEW SANCTUARY FOR  
**PONTE VEDRA UNITED METHODIST CHURCH**  
 76 S. ROSCOE BOULEVARD  
 PONTE VEDRA BEACH, FLORIDA 32082

PROJ. NO:	200716
DATE:	12 JUNE 2008
DRAWN BY:	WDC
CHECKED BY:	RLS
FIRST FLOOR PLAN, PARTITION TYPES, AND NOTES	
SHEET NO.	<b>A2.1</b>
OF:	SET: